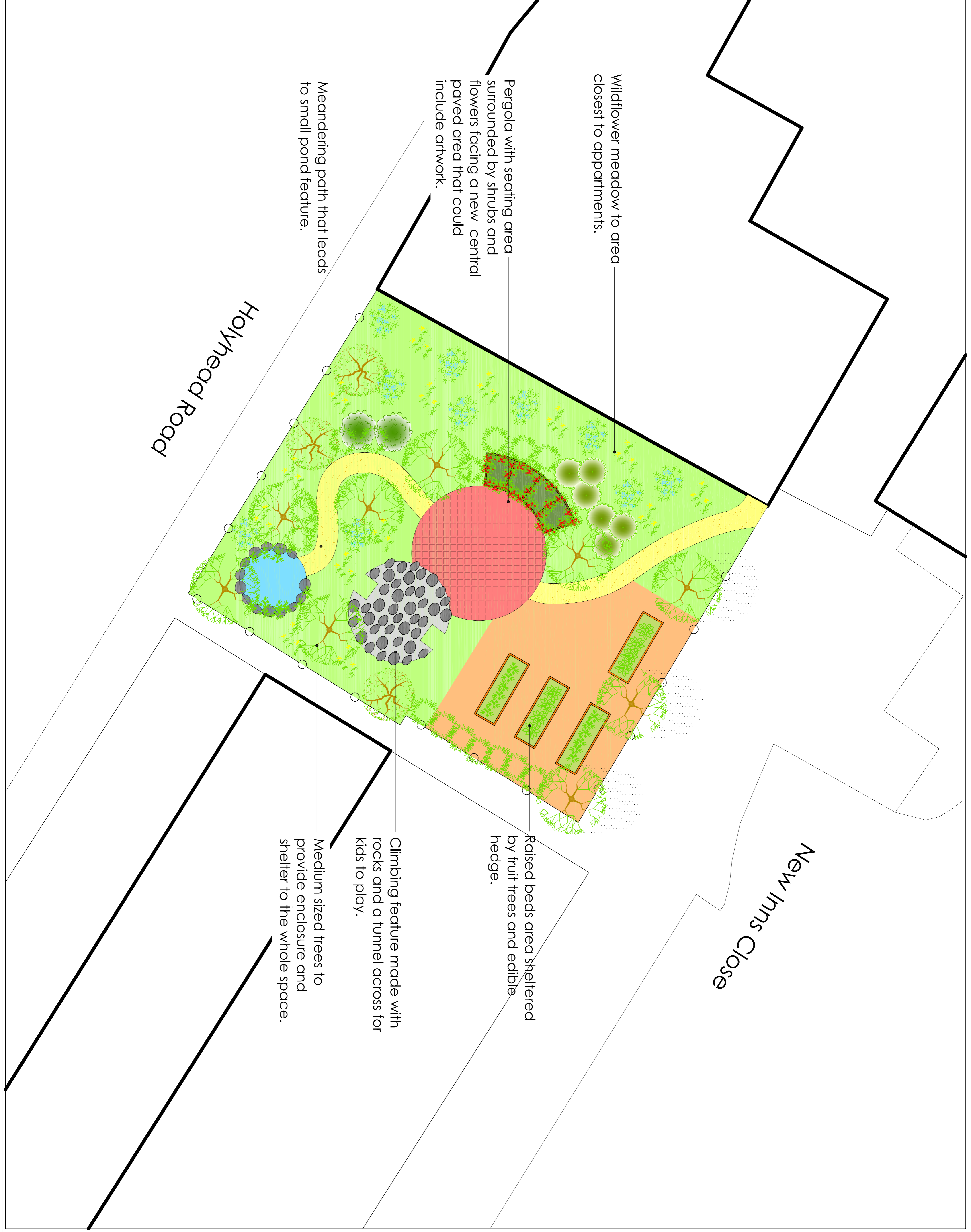


Notes  
 1) Figured dimensions to be taken. Do not scale dimensions. Colour codes may vary, all dimensions on site before preparing.  
 2) Copyright ©. This drawing must not be reproduced without the permission of The Groundwork Trust  
 3) Reproduction from a survey mapping with permission of the contractor of HESCA.  
 © Crown copyright. Unauthorised reproduction infringes Crown copyright and may lead to prosecution or civil proceedings.  
 This map is based upon Ordnance Survey material with the permission of Ordnance Survey on behalf of the Controller of Her Majesty's Stationery Office. This material is reproduced in part and in whole without any alteration in any form or by any means and for any purpose other than reproduction infringes Crown Copyright and may lead to prosecution or civil proceedings.



Wildflower meadow to area closest to apartments.

Pergola with seating area surrounded by shrubs and flowers facing a new central paved area that could include artwork.

Meandering path that leads to small pond feature.

Holyhead Road

New Inns Close

Raised beds area sheltered by fruit trees and edible hedge.

Climbing feature made with rocks and a tunnel across for kids to play.

Medium sized trees to provide enclosure and shelter to the whole space.

<p><b>GROUNDWORK</b>          Groundwork West Midlands          Groundwork Environmental Centre          21-23 The Quadrant          Edgbaston          Birmingham B15 2TT          Tel: 0121 5365500          Fax: 0121 5365501          Email: info@groundwork.org.uk          www.groundwork.org.uk</p>		<p>Groundwork West Midlands          Groundwork Environmental Centre          21-23 The Quadrant          Edgbaston          Birmingham B15 2TT          Tel: 0121 5365500          Fax: 0121 5365501          Email: info@groundwork.org.uk          www.groundwork.org.uk</p>	
<p>CLIENT <b>SUCCESSFUL NEIGHBOURHOODS HANDSWORTH</b></p> <p>PROJECT <b>NEW INNS</b></p>			
<p>TITLE <b>SKETCH DESIGN</b></p>			
SCALE	DATE	DRAWING NO.	
1:100	14.12.10	NA	
DRAWN BY	CHECKED BY	PROJECT CODE	ISSUE
MAI		000	